

Mezzanine Inspection Report

Date: 06/10/15	Station Name: D04 Federal Center	Mezzanine #: 058	Completed By: Mike Butler
-----------------------	---	-------------------------	----------------------------------

Summary

NEPP-01: Video scoping and pull string installation was completed for communication duct in lower faregate array; video scoping was also completed for power duct in lower faregate. It should be noted that the lower faregate communication duct is partially dislodged causing a minor obstruction. Video scoping and pull string installation could not be completed in upper faregate array due to collapses in communication and power ducts. Video scoping and pull string installation was not possible in power duct from Kiosk to Handhole 1 due to a collapsed duct. However, video scoping and pull string installation was completed between Handhole 1, Handhole 2 and AFC Panel. Scanning was subsequently conducted to identify a new power route from the Kiosk to AFC Panel. Alternate ducts leading to the back rooms were identified and there is space on the mezzanine floor for a new in-floor duct if needed.

NEPP-02: Video scoping and pull string installation was attempted in 4 empty ducts that run parallel from the Kiosk to Cleaners Room. It was not possible to complete video scoping or pull string installation in the 4 alternate ducts because there are collapses at 5' from either side of the duct runs. It is recommended to repair and replace one of the empty alternate ducts by replacing the damaged duct section(s) with a new walker duct. A junction box is proposed at the duct stub-up location in Cleaners Room. A proposed overhead conduit will run from the proposed junction box to AFC Panel.

Refer to photos and drawings for further information.

NEPP-01: Scoping of Faregate Arrays (12/11/14)

Task	Yes/No	Notes
Communications Duct – Upper Faregate Array (3 gates)		
Was video scoping completed for the entire duct run?	No	Refer to "WMATA Federal Center SW 3inch Upper Comm. Faregates Video.avi".
Were pull strings installed at all faregates in the array?	No	
Were there any obstructions or blockages? Provide details of type and specific location.	Yes	Duct collapsed 5' from the Kiosk.
Is the duct at capacity? Provide additional details about the dimensions of ducts and number of wires.	No	3" walker duct with less than 8 wires.
Communications Duct - Lower Faregate Array (5 gates)		
Was video scoping completed for the entire duct run?	Yes	Refer to "WMATA Federal Center SW 3inch Lower Comm. Faregates Video.avi"
Were pull strings installed at all faregates in the array?	Yes	
Were there any obstructions or blockages? Provide details of type and specific location.	Yes	Duct is partially dislodged.
Is the duct at capacity? Provide additional details about the dimensions of ducts and number of wires.	No	3" walker duct with less than 8 wires.
Power Duct - Upper Faregate Array (3 gates)		
Was video scoping completed for the entire duct run?	No	Refer to "WMATA Federal Center SW 6inch Upper Power Faregates Video.avi"
Were there any obstructions or blockages? Provide details of type and specific location.	Yes	Duct is collapsed.
Is the duct at capacity? Provide additional details about the dimensions of ducts and number of wires.	No	6" walker duct with less than 10 wires.
Power Duct - Lower Faregate Array (5 gates)		
Was video scoping completed for the entire duct run?	Yes	Refer to "WMATA Federal Center SW 6inch Lower Power Faregates Video.avi"
Were there any obstructions or blockages? Provide details of type and specific location.	No	
Is the duct at capacity? Provide additional details about the dimensions of ducts and number of wires.	No	6" walker duct with less than 10 wires.

NEPP-01: Scoping of Existing Power Duct - Kiosk to AFC Panel (12/11/14)		
Task	Yes/No	Notes
Kiosk to Handhole 1 (Distance: 92')		
Was video scoping completed for the entire duct / conduit run?	No	Refer to "WMATA Federal Center SW 6inch Power Feed Video.avi".
Was pull string installed?	No	
Were there any obstructions or blockages? Provide details of type and specific location.	Yes	Duct is collapsed 5' from the Kiosk.
Is the duct / conduit at capacity? Provide additional details about the dimensions of duct / conduit and number of wires.	No	6" walker duct with less than 12 wires.
Handhole 1 to Handhole 2 (Distance: 18')		
Was video scoping completed for the entire duct / conduit run?	Yes	Refer to "WMATA Federal Center SW 6inch Power Feed HH1 to HH2 to AFC Panel Video.avi".
Was pull string installed?	Yes	
Were there any obstructions or blockages? Provide details of type and specific location.	No	
Is the duct / conduit at capacity? Provide additional details about the dimensions of duct / conduit and number of wires.	No	6" walker duct with less than 12 wires.
Handhole 2 to AFC Panel (Distance: 25')		
Was video scoping completed for the entire duct / conduit run?	Yes	Refer to "WMATA Federal Center SW 6inch Power Feed HH1 to HH2 to AFC Panel Video.avi".
Was pull string installed?	Yes	
Were there any obstructions or blockages? Provide details of type and specific location.	No	
Is the duct / conduit at capacity? Provide additional details about the dimensions of duct / conduit and number of wires.	No	6" walker duct with less than 12 wires.
NEPP-01: Scanning of Mezzanine Floor (01/12/15)		
<ul style="list-style-type: none"> - Scanning was conducted to identify a new power route from the Kiosk to AFC Panel. - Alternate duct pathways leading to the back rooms were identified. - There is space on the mezzanine floor for a new in-floor duct if needed. 		


NEPP-02: Scoping of Four Alternate Ducts- Kiosk to Cleaners Room (06/10/15)		
Task	Yes/No	Notes
Alternate Duct 1 - Kiosk to Cleaners Room (Distance: 65')		
Was video scoping completed for the entire duct / conduit run?	Yes	Refer to "D04_MZ058_Federal Center_Alternate Duct 1_Kiosk to Cleaners Room.avi".
Was pull string installed?	No	
Were there any obstructions or blockages? Provide details of type and specific location.	Yes	Duct is collapsed 5' from Kiosk and 5' from duct stub-up in Cleaners Room.
Is the duct / conduit at capacity? Provide additional details about the dimensions of duct / conduit and number of wires.	No	Empty 6" walker duct.
Alternate Duct 2 - Kiosk to Cleaners Room (Distance: 65')		
Was video scoping completed for the entire duct / conduit run?	Yes	Refer to "D04_MZ058_Federal Center_Alternate Duct 2_Kiosk to Cleaners Room.avi".
Was pull string installed?	No	
Were there any obstructions or blockages? Provide details of type and specific location.	Yes	Duct is collapsed 5' from Kiosk and 5' from duct stub-up in Cleaners Room.
Is the duct / conduit at capacity? Provide additional details about the dimensions of duct / conduit and number of wires.	No	Empty 6" walker duct.
Alternate Duct 3 - Kiosk to Cleaners Room (Distance: 65')		
Was video scoping completed for the entire duct / conduit run?	Yes	Refer to "D04_MZ058_Federal Center_Alternate Duct 3_Kiosk to Cleaners Room.avi".
Was pull string installed?	No	
Were there any obstructions or blockages? Provide details of type and specific location.	Yes	Duct is collapsed 5' from Kiosk and 5' from duct stub-up in Cleaners Room.
Is the duct / conduit at capacity? Provide additional details about the dimensions of duct / conduit and number of wires.	No	Empty 6" walker duct.
Alternate Duct 4 - Kiosk to Cleaners Room (Distance: 65')		
Was video scoping completed for the entire duct / conduit run?	Yes	Refer to "D04_MZ058_Federal Center_Alternate Duct 4_Kiosk to Cleaners Room.avi".
Was pull string installed?	No	
Were there any obstructions or blockages? Provide details of type and specific location.	Yes	Duct is collapsed 5' from Kiosk and 5' from duct stub-up in Cleaners Room.
Is the duct / conduit at capacity? Provide additional details about the dimensions of duct / conduit and number of wires.	No	Empty 6" walker duct.
Observations / Issues / Next Steps		
<ul style="list-style-type: none"> - All four alternate ducts have collapses at 5' from either side of the duct run. - It is recommended to repair and replace the damaged section(s) for one of the empty alternate ducts between Kiosk and Cleaners Room. - The distance of proposed power route from Kiosk to AFC Panel is 180', including 65' of repaired alternate duct and 115' of proposed overhead conduit. 		
Sign Off		
	GFP Representative	WMATA PRGM
Name:	Mike Butler	
Signature:		
Date:	06/17/15	

Photo 1 – Existing and alternate ducts on mezzanine floor.

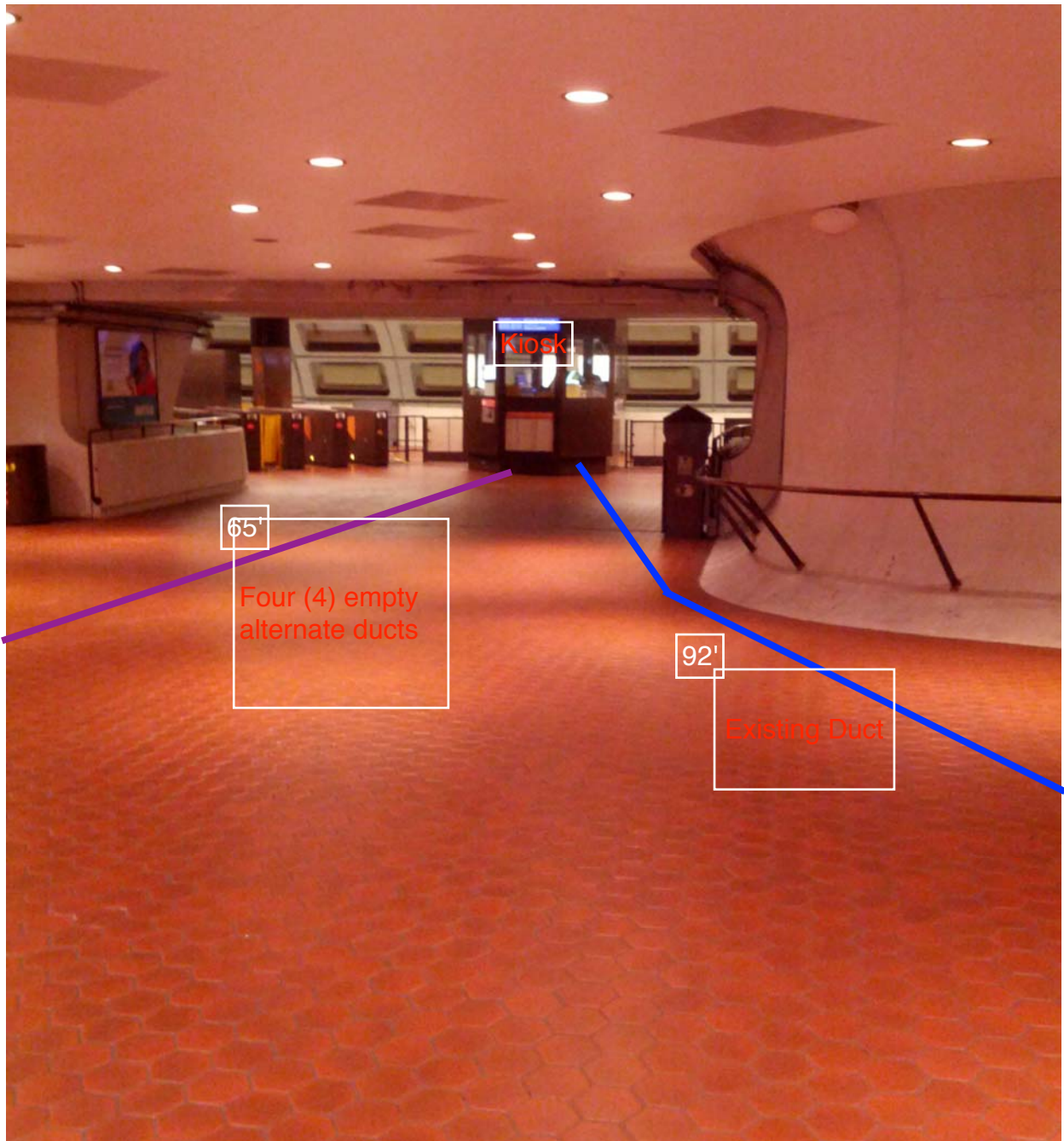


Photo 2 – Existing duct on mezzanine floor.



Photo 3 – Existing duct / handholes in Room C205.

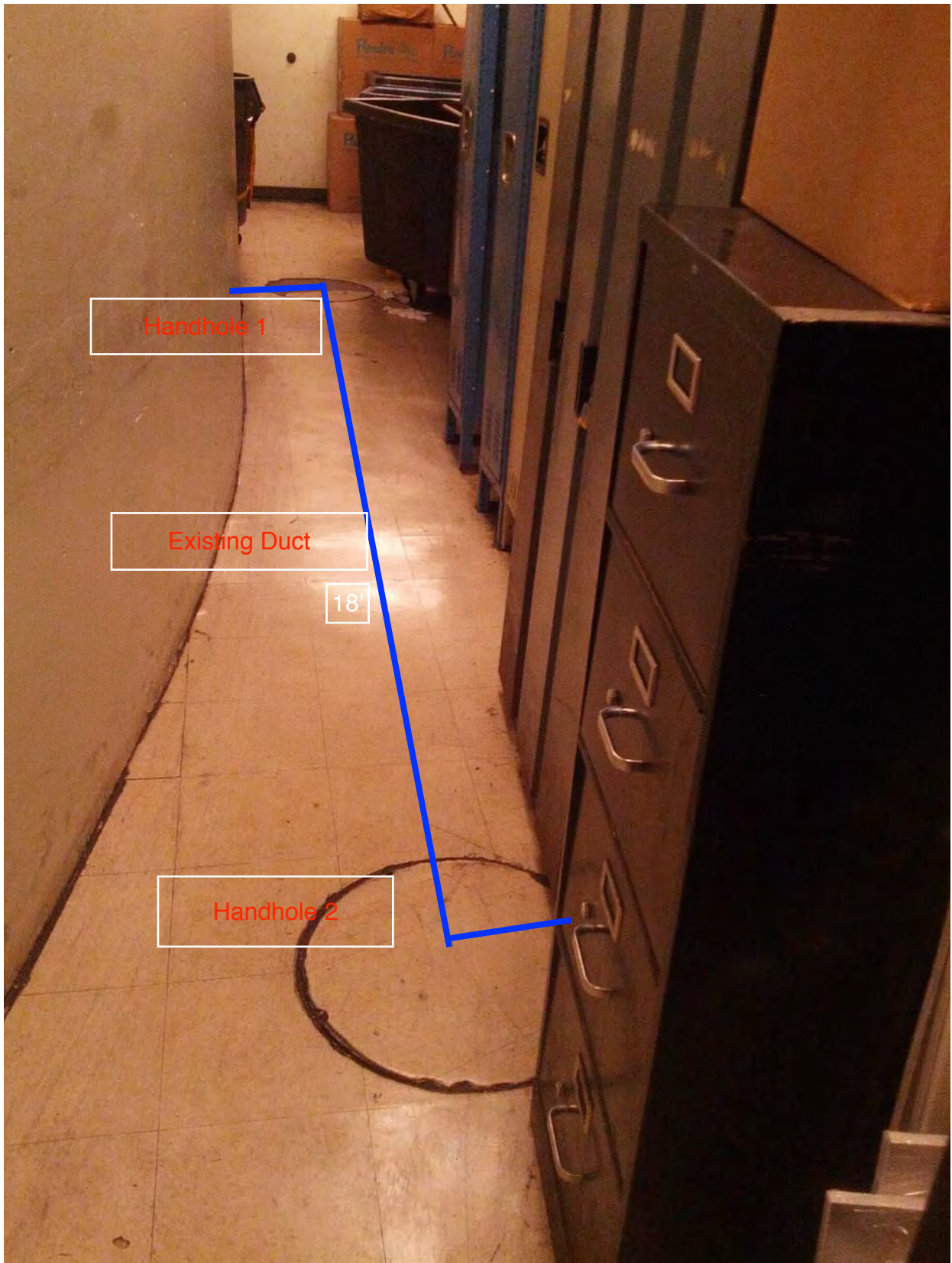


Photo 4 – Existing vertical duct run up to Room C206 where AFC Panel is located.

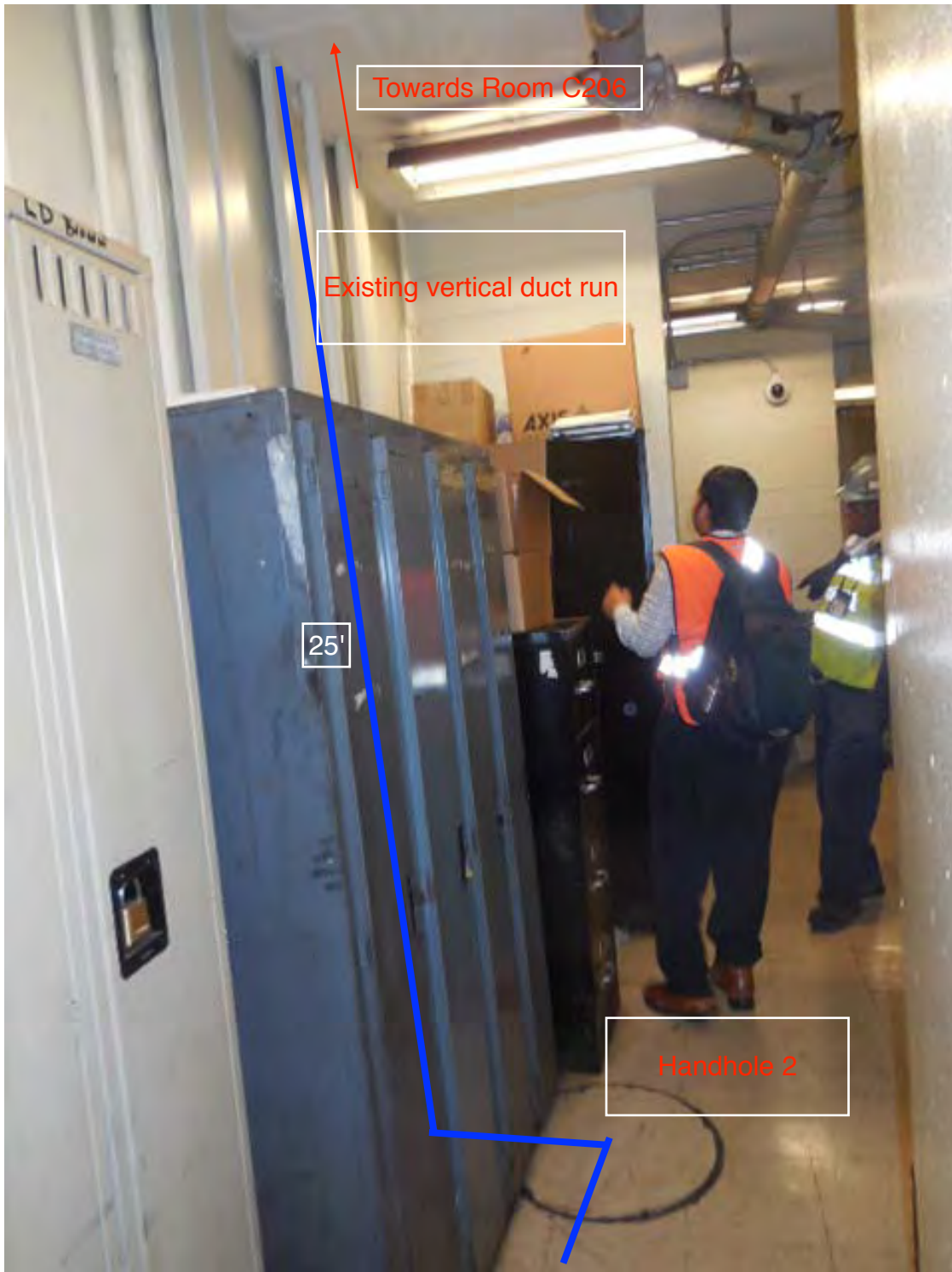


Photo 5 – Proposed junction box and overhead conduit from duct stub-up in Cleaners Room.

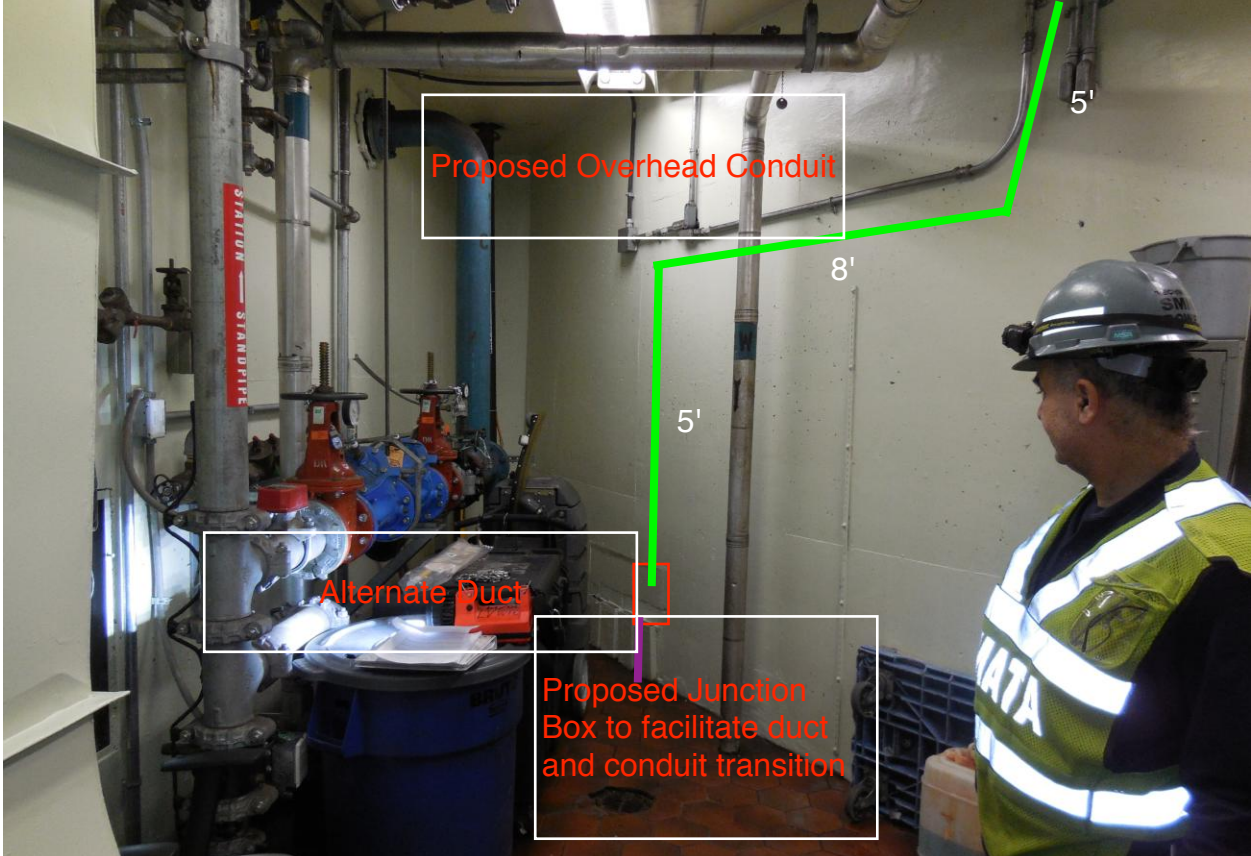


Photo 6 – Proposed overhead conduit in Cleaners Room.

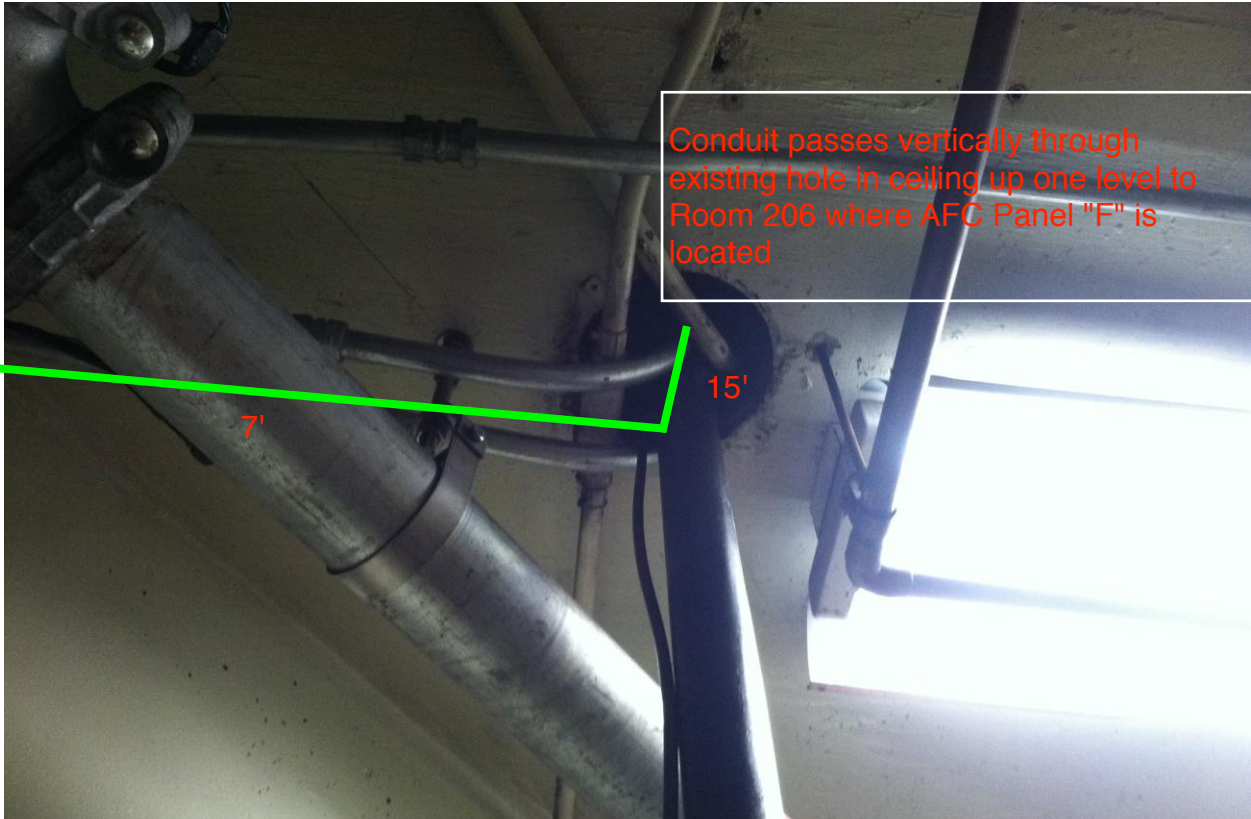


Photo 7 – Proposed overhead conduit in Room 206.

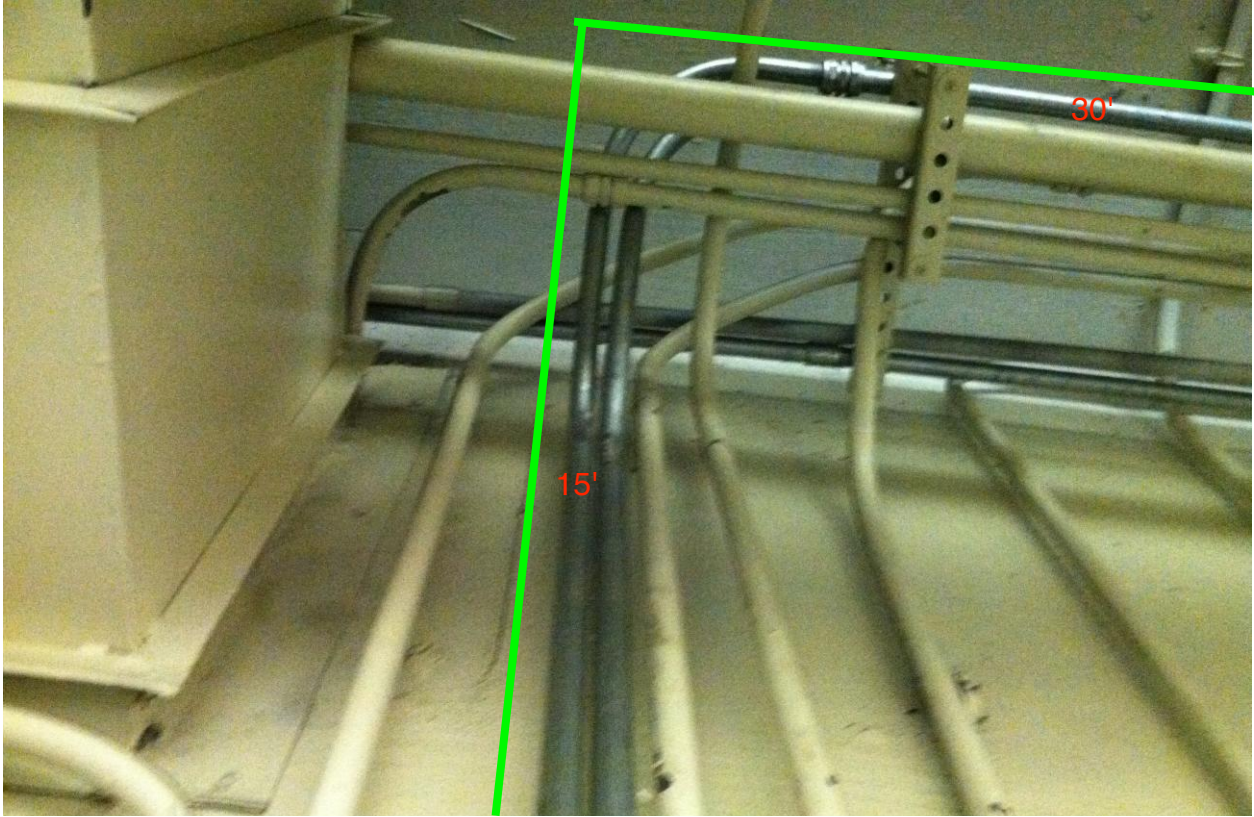


Photo 8 – Proposed overhead conduit in Room 206.

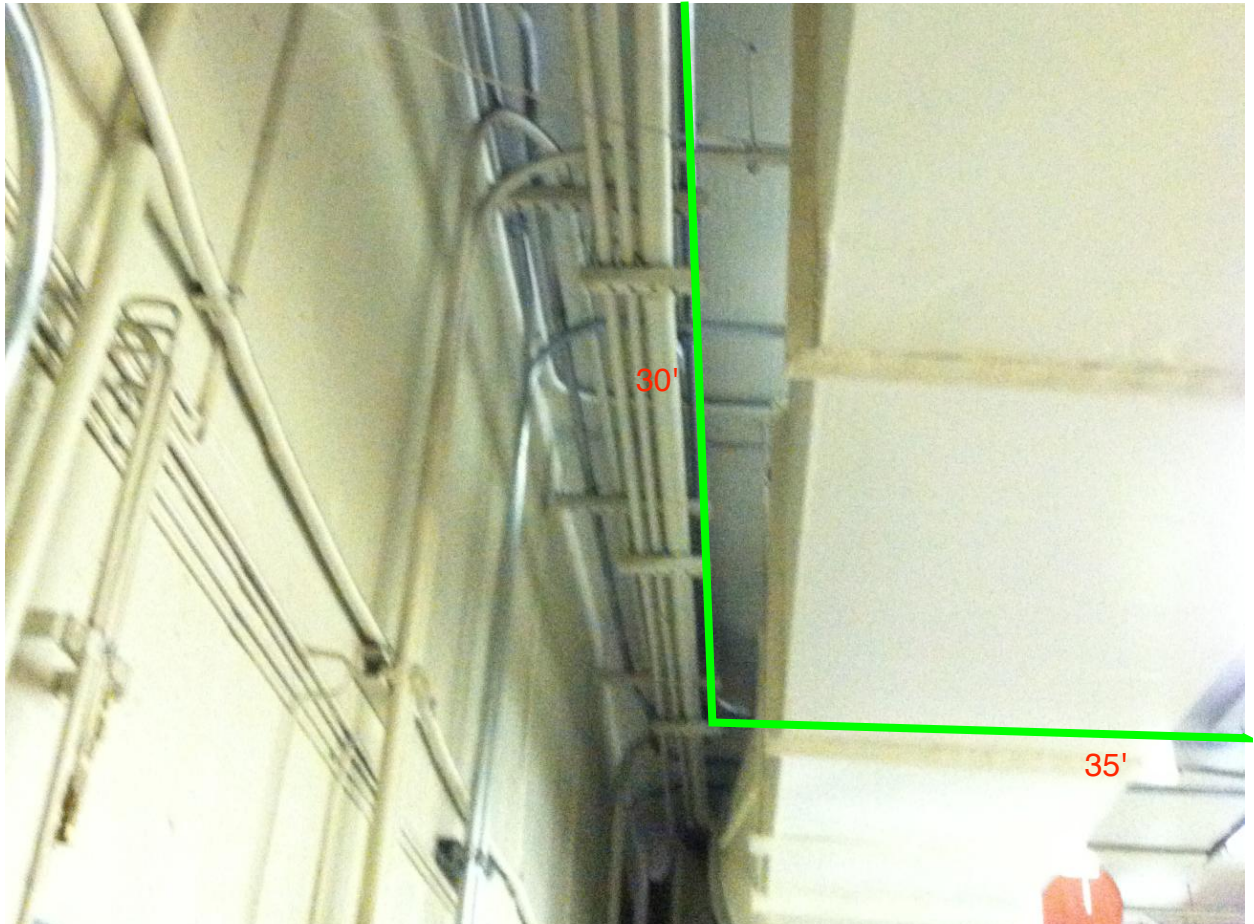


Photo 9 – Proposed overhead conduit in Room 206.

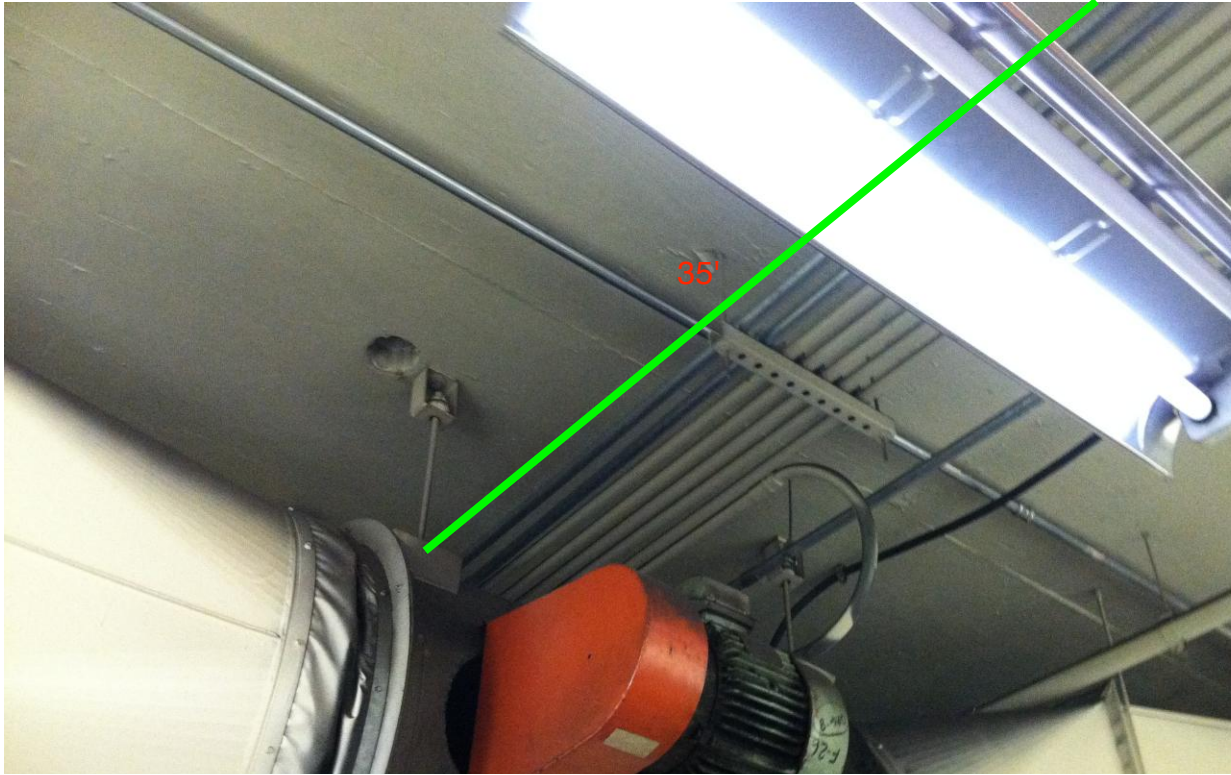
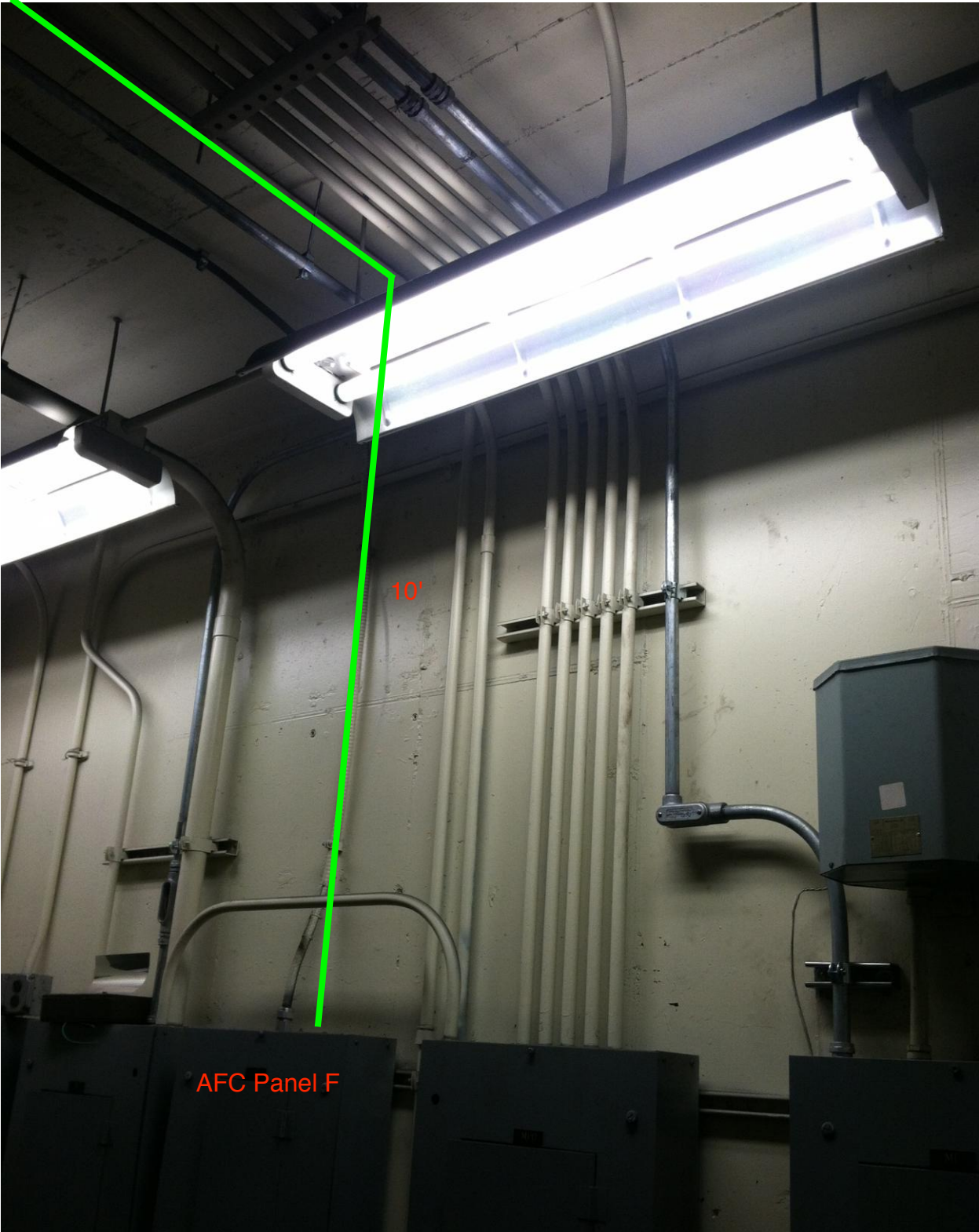


Photo 10 – Proposed overhead conduit in Room 206.



Photo 11 – Proposed overhead conduit in Room 206.



NOTES:

ALL INFORMATION CONCERNING DUCTS AND CONDUITS IS BASED ON INFORMATION SUPPLIED TO CUBIC WESTERN DATA BY MVA.

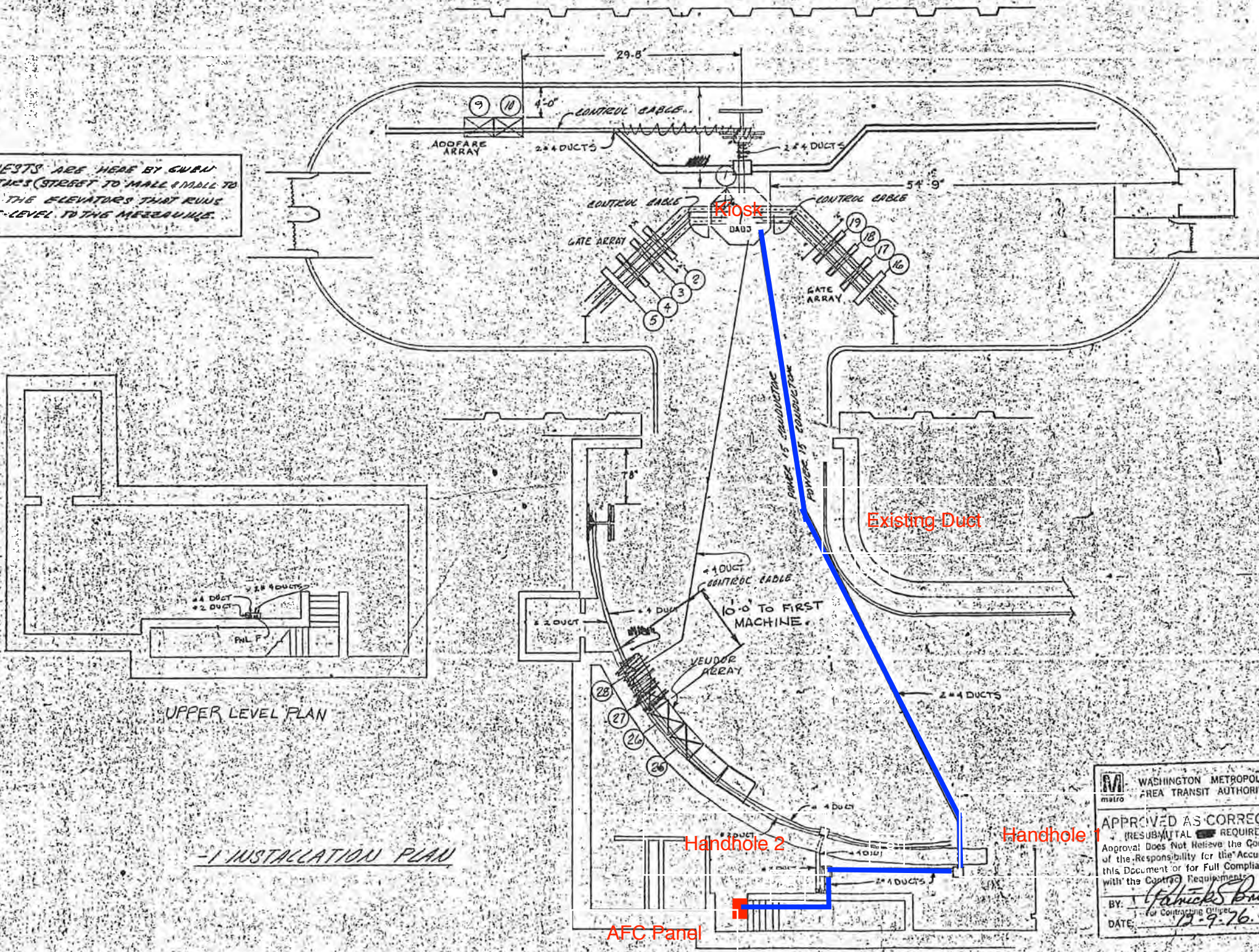
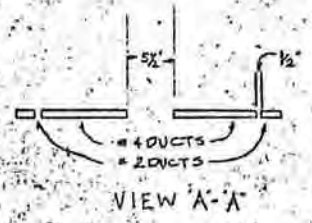
THE MACHINE INVENTORY IS DEPICTED ON THIS DRAWING.

THE MINIMUM OPERATIONAL MACHINE INVENTORY IS REFERENCED ON THIS DRAWING BY THE LETTER 'X' DRAWN THRU THE MACHINE.

FOR AS BUILT CONDITIONS SEE SHEET E. FOR REFERENCE DRAWINGS USED SEE SUPPORT DOCUMENTATION PACKAGE FOR THIS MEZZANINE.

PRIORITY REQUESTS ARE HERE BY CWRU FOR BOTH ESCALATORS (STREET TO MALL & MALL TO MEZZANINE) AND THE ELEVATORS THAT RUNS FROM THE STREET LEVEL TO THE MEZZANINE.

Existing Duct Layout



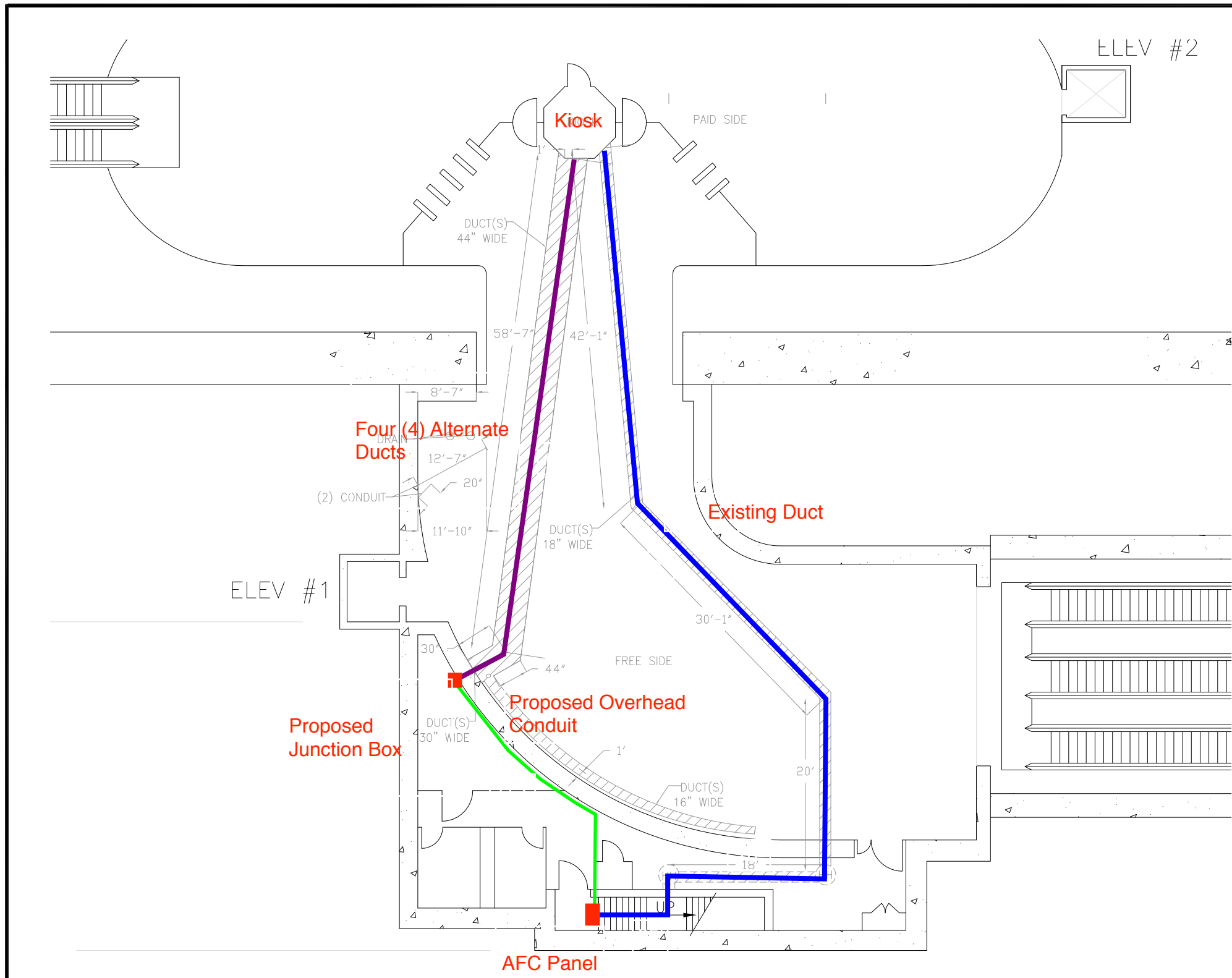
UPPER LEVEL PLAN

-1 INSTALLATION PLAN

CR 23007A-115-2-0
WASHINGTON METROPOLITAN
AREA TRANSIT AUTHORITY

WASHINGTON METROPOLITAN AREA TRANSIT AUTHORITY
APPROVED AS CORRECTED (RESUBMITAL REQUIRED)
Approval Does Not Relieve the Contractor of the Responsibility for the Accuracy of this Document or for Full Compliance with the Contract Requirements.
BY: *Patrick Brione*
DATE: 12-9-76

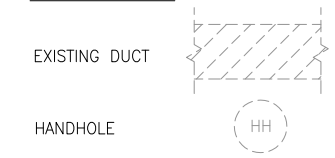
CONTRACT NUMBER	CUBIC WESTERN DATA
DESIGN	FEDERAL CENTER S.W. STATION
CHECKED	AFC MACHINE
DRAWN	
SCALE	026-0386



PLAN NOTES:

1. DIMENSIONS ARE IN FEET AND INCHES.
2. DIMENSIONS ARE FOR REFERENCE ONLY.
3. EXISTING IN-FLOOR DUCTS/CONDUITS WERE IDENTIFIED USING A PORTABLE GPR SCANNING DEVICE.
4. THE SCANNING COVERAGE IS LIMITED TO THE MEZZANINE FLOOR ONLY.
5. GPR SCANNING HAS THE FOLLOWING LIMITATIONS: (i) 12 INCHES VISIBLE SCANNING DEPTH; (ii) VISIBILITY BEYOND CONGESTED OR NEAR SURFACE REINFORCEMENT LAYERS; (iii) DETECTION OF PVC AND OTHER NON-METALLIC OBJECTS (iv) DETERMINATION OF SIZE AND EXTENTS OF SUBSURFACE ANOMALIES SUCH AS SLAB VOIDS OR REBAR SIZES; AND (v) VISIBILITY WHEN VARIABLE MOISTURE CONDITIONS EXIST IN THE SUBSTRATE.
6. WIRE MESH IN SLAB IS VERY TIGHT THROUGH OUT STATION PLATFORM. EMBEDDED CONDUIT WAS DIFFICULT TO LOCATE.

LEGEND:



ELEV #1

ELEV #2

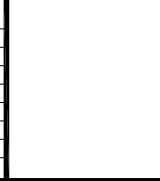
FEDERAL CENTER STATION
SCALE: NOT TO SCALE

CONTRACT NO.
XXXXXX

DESIGNED	C. LOOSE	11-14
		DATE
DRAWN	C. LOOSE	11-14
		DATE
CHECKED	M. BUTLER	11-14
		DATE
APPROVED		
		DATE

REFERENCE DRAWINGS	
NUMBER	DESCRIPTION

REVISIONS		
DATE	BY	DESCRIPTION



WASHINGTON METROPOLITAN AREA TRANSIT AUTHORITY
DEPARTMENT OF TRANSIT INFRASTRUCTURE AND ENGINEERING SERVICES
OFFICE OF INFRASTRUCTURE RENEWAL PROGRAM
APPROVED _____

GFP A Gannett Fleming/Parsons JOINT VENTURE
SUBMITTED _____
PROJECT MANAGER

15-NEPP-01
IN - FLOOR DUCT INSPECTIONS
D04 Federal Center
PROPOSED POWER ROUTE
SCALE
NOT TO SCALE

DRAWING NO.
D04-E-100
XXX